

Location Saisonnière à partir de € 895/sem

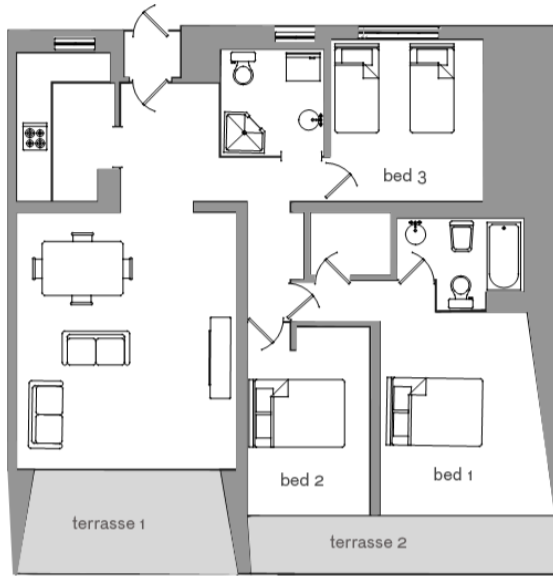
Holiday Let from €895/week



Realtors / Agents Immobiliers
Sales / Ventes
Rentals / Location
Holiday lets / Location vacances
Valuation / Expertise
Management / Gestion

Le Commodore
BP-75
Marina Baie des Anges
06271 Villeneuve-Loubet Cedex
tel +33 (0)4 93 22 55 22
web www.immobiliere-pelou.com
email info@immobiliere-pelou.com

Type Property Type	Appartement 4 pièces 3 bedroom apartment
Localité Location	Marina Baie des Anges
Surface Habitable Floor Area	105 m² + 20 m² Terrasse



Ceiling Height - H.S.Plafond 2,60m
Kitchen 2,11m x 3,59m = 7,58m²
Reception 2,76m x 2,3m = 6,35m²
Living 5,82m x 4,86m = 28,79m²
Bed2 3,05m x 4,24m = 12,93m²
Bed1 3,1m x 4,59m = 14,23m²
Bed3 3,44m x 3,49m = 12,01m²
Shower1 2,06m x 2,63m = 5,42m²
Bath1 2,0m x 2,93m = 5,86m²
Terrasse 1 4,74m x 2,31m = 10,95m²
Terrasse 2 6,33m x 1,37m = 8,67m²

For information Only
Not to Scale
Document non Contractuel

© laurent@3mille.com pour Immobiliere-Pelou

