

For Sale € 922 200
A Vendre



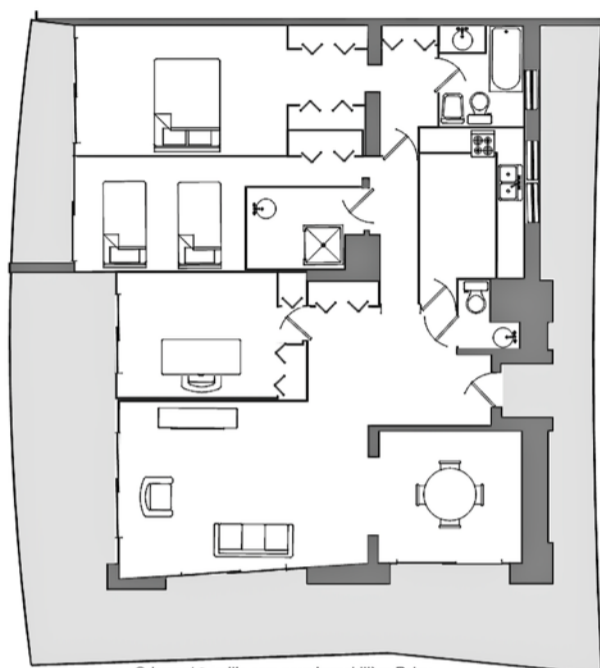
Property type **3 bedroom apartment + cellar + garage**
Type **4 pièces + cave + garage**

Location **Villeneuve Loubet Marina**
Localité

Floor area **112 m² + 71 m² Terrasse**
Surface habitable

Realtors / Agents Immobiliers
Sales / Ventes
Rentals / Location
Holiday lets / Location vacances
Valuation / Expertise
Management / Gestion

Le Commodore
BP-75
Marina Baie des Anges
06271 Villeneuve-Loubet Cedex
tel +33 (0)4 93 22 55 22
web www.immobiliere-pelou.com
email info@immobiliere-pelou.com



Ceiling Height 2.6m
Hauteur sous plafond 2.6m
Terrasse nord 12.3m x 1.4m = 16.9m²
Terrasse Est 13.5m x 2.2m = 30m²
Terrasse sud 6.7m x 2.3m = 17m²
Terrasse Sud2 6.7m x 1.2m = 7.5m²
Bed2 3m x 4m = 12m²
Reception 2.7m x 4.3m = 11.8m²
Living 4m x 6m = 23.5m²
Dining 3.4m x 3.4m = 11.2m²
Kitchen 3.6m x 2.6m = 9.2m²
Office 3.8m x 3m = 11.2m²
Shower 1.9m x 2.3m = 5.2m²
Bed1 3.6m x 6.9m = 24m²
Bath 2m x 2.3m = 4.5m²

For Information Purpose Only
Not to Scale
Document Non Contractuel

© laurent@3mille.com pour Immobilière Pelou

